

2024/2025



# Milford Haven School Prospectus

## Prosbectws Ysgol Aberdaugleddau

**TOGETHER ASPIRE ~ TOGETHER ACHIEVE**  
Gyda'n gilydd, ymdrechwn ~ Gyda'n gilydd, cyflawnwn





# Welcome to

MILFORD HAVEN SCHOOL

# Croeso i

YSGOL ABERDAUGLEDDAU

Dear Parents and Carers,

On behalf of all the pupils, staff and governors of Milford Haven School I would like to extend a very warm welcome to you. At Milford Haven School we pride ourselves in our inclusive ethos which provides support and dedicated pastoral care to ensure all pupils are able to develop their talents, character and skills to achieve their potential as they progress on their educational journey. We are steadfast in our aim to work in close partnership with parents/carers and the community to ensure all our pupils are happy, confident and enquiring individuals who will follow informed career paths of their choice in the future.

Our vision is to empower and inspire all pupils for a successful future. United in our commitment to dynamic educational experiences for ambitious, creative and confident learners. School years are amongst the most important in our lives, helping us to develop the knowledge, skills and characteristics we need to succeed. Our mission is to achieve excellence together, working collaboratively to enable every student to achieve their full potential through a culture of high expectation, innovation and celebration of success, where every student counts and every moment matters.

Our responsibility is to help children understand and believe in themselves, respect and care for others and to develop a wide understanding of the ever-changing world around them and their place within it.

The determination of our pupils to succeed, and the passion of our teachers and governors to make a difference, makes me proud to be Headteacher of this diverse and dynamic family here at Milford Haven.

Yours faithfully

*Ms Ceri-Ann Morris*

Headteacher/ Prifathro





# School Aims & Ethos

## Nodau ac Ethos yr Ysgol

### OUR KEY PURPOSE

Milford Haven School aims to provide the best possible education for children of all abilities within a happy, child-centred, pleasant working environment.

### OUR HOPES AND EXPECTATIONS

It is incumbent on all of us, governors, teachers, support staff, parents/carers and pupils, to have high expectations, to encourage and expect success and to seek to develop the full potential of every one of us.

### OUR CURRICULUM

We aim to provide a relevant, broad and balanced curriculum, underpinned by a level of pastoral monitoring and support which enables all pupils to have equal access to the curriculum and maximise their achievement.

### OUR COMMITMENT

We believe that the quality of both teaching and learning is crucial to the success of individual pupils, and must be firmly rooted in an atmosphere of raising expectation and constantly striving for improvement.

### MILFORD HAVEN CLUSTER OF SCHOOLS

Milford Haven Cluster of Schools is united in its commitment to dynamic educational experiences for ambitious, creative, confident and ethical learners.

### MHS CURRICULUM VISION

Milford Haven School's vision is to provide a curriculum to help our learning community achieve the four purposes and achieve our ASPIRE values. Our vision is to create a responsive and engaging curriculum that is theory and practically based, is relevant, inclusive, challenging and establishes a shared sense of **RESPONSIBILITY** and equity: to ourselves, others, our community and our environment. We will develop collaboration, ensuring our pupils and staff are proud to work together with a strong sense of shared purpose and proud to participate for their house and school, giving maximum **EFFORT** to achieve their best.

Our vision is to create a curriculum that will motivate our pupils to be **AMBITIOUS**, committed, excited and engaged with their learning. We want to instil in our pupils a feeling of **SELF BELIEF** that will develop their personal skills, such as being **INDEPENDENT**, empathetic, **PERSISTENT**, kind and honest, remembering we are here to learn.

We will aspire to ensure that our dedicated staff will be dynamic and ambitious, as well as compassionate and supportive with the learning community. This will ensure we all feel confident, safe and highly valued, so we can achieve our cultural norms.







# The MHS House System

## System Tŷ MHS

The House System aims to provide each and every learner with the following:

- A sense of belonging within the school community.
- Opportunities to develop intellectual, social, and physical skills.
- Fun and excitement through competitions.
- A sense of achievement both inside and outside of the classroom.
- Opportunities for leadership.

During your time here at Milford Haven School, your house will become like your family, if you have any worries or concerns your Head of House and Achievement will always be on hand to help.

Pupils are assigned to their house upon entering Year 7 to which they will belong for their remaining time at MHS. Siblings will be assigned to the same Houses where possible. Pupils will follow a series of induction challenges such as The Dauntless Quest of Achievement, which encompasses activities both inside and outside of the classroom.

Each House has designated House Captains who will act as representatives for all learners throughout the year, helping organise events and competitions as well as represent their house at meetings. The four houses are:



**DARING - DEWR**

Be brave. Be bold. Be daring



**DEFENDER - DIFFYNNWWR**

Drive. Determination. Dedication



**DIAMOND - DEIMWNT**

Shine. Smile. Succeed



**DRAGON - DRAIG**

Honesty. Determination. Integrity



# The Curriculum

## Y Cwricwlwm

The school follows the National Curriculum for Wales and subjects are organised in seven Areas of Learning and Experience (AoLE). These are:

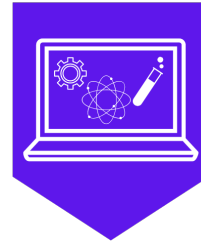
### Maths & Numeracy



### Languages, Literacy & Communications



### Science



### Health & Wellbeing



### Expressive Arts



### Humanities



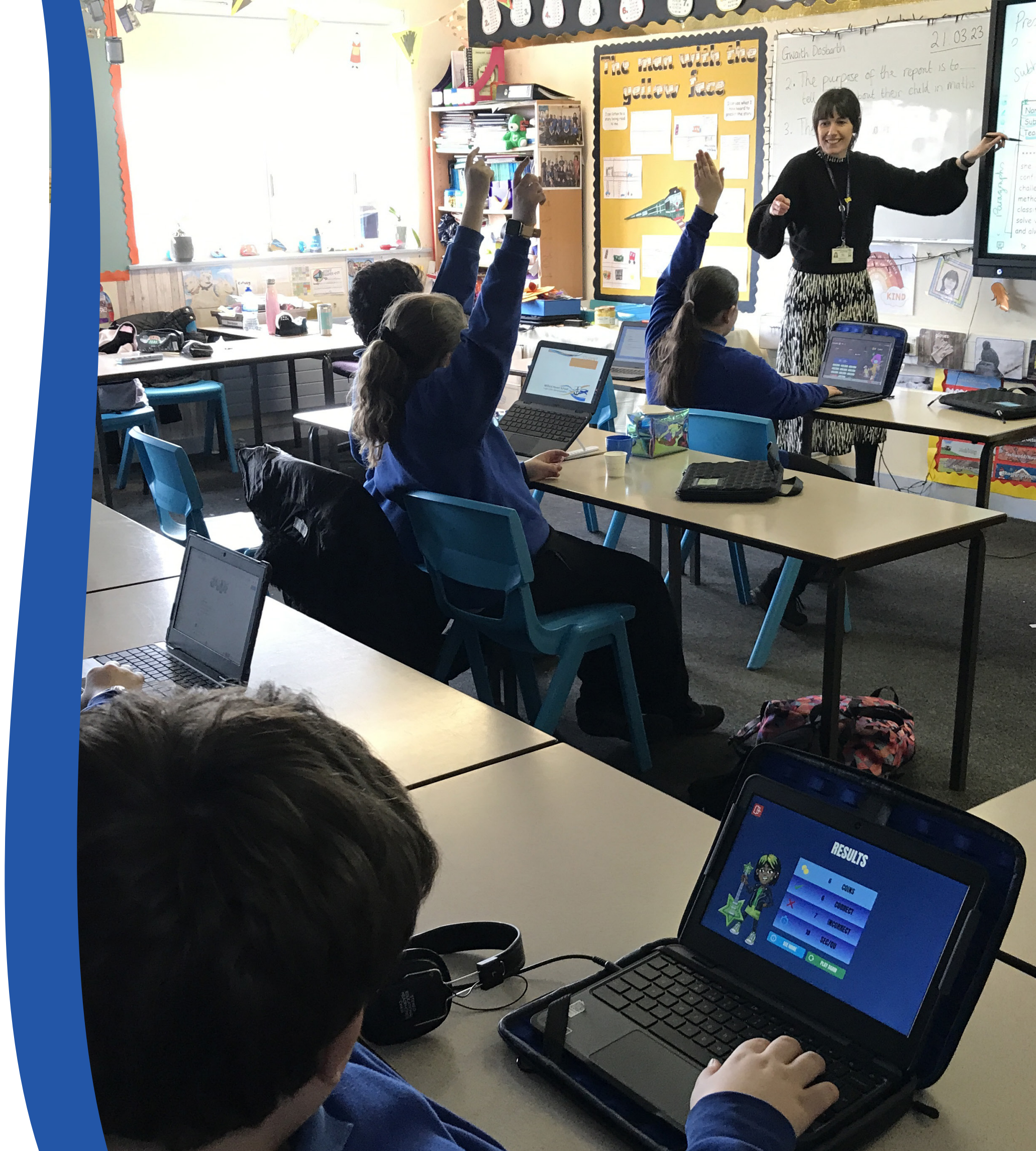
### Technology



These 7 Areas of Learning and Experience aim to achieve the four purposes of the Curriculum for Wales and cover the following subjects:

- Art
- Design & Digital Technology
- Drama/Performing Arts
- English
- Ethics
- Geography
- History
- International Languages
- Mathematics
- Music
- Physical Education
- PSE (Health & Wellbeing)
- Science
- Welsh

All pupils study a core curriculum consisting of English, Mathematics and Numeracy, GCSE Science, Welsh 2nd Language full course, PE (Games), Health and Wellbeing, RVE (religion, values & ethics), RSE (relationships, sexuality & education) and work related education/careers. Pupils have three option choices in addition to the core and statutory subjects.







## Inclusion Cynhwysiad

**'We're more than just a school and its curriculum, we're a family.'**

At Milford Haven School, we are committed to inclusion and to educating as many of our pupils within a mainstream setting. Alongside this, we have a range of provisions designed to address the needs of pupils who may require additional support.

### Outreach

Outreach is a supported reintegration programme for vulnerable young people, resident in Milford Haven, who are unable to attend school for reasons of low mood, anxiety, phobias. Our Outreach programme will create a partnership between the home and the school (and other external agencies where appropriate) in order to ensure each pupil reaches their full potential.

### School Counsellor

The Counselling Service is for all pupils. Pupils can bring any issue to counselling, there is nothing too big or too small. The Counsellor is trained to work with many issues people face today including anxiety, loss, separation, anger, relationship problems and fears.

### Marina

The Marina space is where pupils with ASD can get wellbeing support. Along with wellbeing support, the pupils who access this room also gain social skills, life skills and communicative skills. Some of the pupils who access the participate in activities such as Art and Mindfulness. The pupils also learn and develop techniques and strategies which help them deal with stress and anxiety.

### Youth Worker

Our Youth Support Worker helps vulnerable young people aged 11 – 16 to build resilience and develop the skills they need to live, learn and achieve. The Youth Support Worker offers support around behaviour, relationships, peer pressure, health and education to enable young people to take greater control of their lives and make more informed choices.

### Trauma Informed School

At Milford Haven School we believe in providing every child with the opportunity to experience an outstanding education academically, emotionally and socially. We strongly believe that by identifying the barriers to learning, we can provide an inspiring and relevant curriculum that considers the whole child and provides the necessary support for pupils to achieve, develop and reach their true potential.

We are committed to ensuring that Milford Haven School develops a Trauma and Mental Health Informed Approach to ensure that all our pupils develop positive mental health and resilience, enabling them to fully engage in life and learning.

There is a growing body of research and understanding of the impact of Childhood Adversity Experiences (ACE) on long term mental and physical health and the protective factors that mitigate the potential impact. It is our aim to maximise the protective factors of Milford Haven School by creating an environment of safety that has strong, positive and supportive relationships at its heart.



# Literacy & Numeracy

## Llythrennedd a Rhifedd

At Milford Haven School, we work hard to ensure that pupils continue to develop their Literacy, Numeracy and Digital competence skills. Within literacy we expect learners to become accomplished in:

- Oracy across the curriculum
- Reading across the curriculum
- Writing across the curriculum

Within numeracy we expect learners to become accomplished in:

- Developing numerical reasoning
- Using number skills
- Using measuring skills
- Using data skills

At Milford Haven School, teachers will aim to:

- Develop the content of lessons to ensure that all learners have opportunities to develop and refine their literacy and numeracy skills. This will happen in all subjects taught at the school, not just English and Mathematics
- Help learners with their own self-assessment activities and planning for their learning
- Monitor, assess and report on individual learner performance
- Identify learners who may benefit from intervention or who are working beyond age-related expectations. Improving and developing pupils' skills is identified as key to the success of the Curriculum for Wales



The school has strengthened substantially its approach to the development of pupils' skills.

–Estyn







## Your Voice – Your Future Eich Llais – Eich Dyfodol

Milford Haven School are committed to enriching the curriculum for all learners and aim to raise aspirations for all. This includes working closely with outside agencies including Pembrokeshire College and the University of Wales Trinity St David's. Team building exercises, paired with problem solving challenges and even visits off site are just some of the opportunities offered to pupils which expose learners to post 16 opportunities available both locally and further afield.

### Senedd MHS

Milford Haven School has moved away from the traditional structure of multiple school councils, and have instead developed a unique 'Senedd MHS'. One of the many benefits of this system of promoting pupil voice, is that it helps to educate our young people on how the country is governed by mirroring the Senedd structure. 'Senedd MHS' recreates how decisions are made both locally and nationally, allowing pupils the opportunity to experience real world pupil voice through an age appropriate platform.

We feel it is our moral duty to help create ethically and politically well informed citizens. We want our young people to feel empowered to express themselves appropriately and productively, and also for them to be involved in positively instigating change to help our communities thrive.

### Seren Academy

The Seren Academy provides our more able and talented pupils to work with a variety of different organisations as well as like minded young people across Cymru to broaden their horizons regarding their futures. The network focuses primarily on pupils from Years 8-10 whilst also supporting Year 11 pupils with applying to the post 16 Seren Academy. This year our pupils have had the opportunity to work with leading worldwide universities such as Oxford and UCL as well as taking part in workshops on public speaking and life at university amongst others.



Leaders listen to pupils' views and adapt certain aspects of provision accordingly.

– Estyn





# Extra-Curricular Activities

## Gweithgareddau Allgyrsiol

Milford Haven School is committed to the development of the whole child and offers a wide range of extra-curricular opportunities for pupils.

Our E5 programme lists the many exciting activities and clubs on offer before, during and after school. More information about the specific clubs on offer can be found on our school website.



### ENRICH

Enriching the school curriculum outside of lessons

### EXCITE

Offering creative and exciting opportunities to extend learning and in new areas

### ENGAGE

Learners with improving understanding practising and performing to build confidence and self esteem

### ENJOY

Love of Learning

### EXCEL

Our after school homework support club



Pupils are being offered the opportunity to leave early on a Friday afternoon to pursue their own hobbies and interests, or to stay and participate in one of the activities we have on offer at school. Most activities start at 1:55pm and finish at 3.00pm. A full list of activities available can be found on our website.







# Awards and Achievements

## Gwobrau a Llwyddiannau

### Unicef Silver Rights Committed Award



Milford Haven School are extremely proud that we have successfully achieved the Unicef UK Silver - Rights Aware Award for our rights-respecting work.

### Investors in Families Lockdown Award



Milford Haven School has achieved the 'Investors in Families Lockdown Award'. This prestigious award is given to schools that have provided an exceptionally high level of support to children and families throughout the 'lockdown' periods.

### Learning with Autism Award



At Milford Haven School, we are very proud that we are the first and only secondary school in Pembrokeshire to have achieved the nationally recognised and acclaimed 'Learning with Autism Secondary School Award'.

### National Charter Award



Milford Haven School are proud to announce that we have achieved a National Charter recognition for our work with pupil voice. The MHS Senedd makes sure that our young people are part of the design, delivery and evaluation of services here at school.

### Calon Y Gymuned



Milford Haven School are proud to be the first school in Pembrokeshire to be awarded the Gold Calon Y Gymuned award for our quality family engagement work. Alongside this award we were further complimented with the Exceptional Community Champions Award.

### Mental Health Matters School Award



We are very proud to be first school in Pembrokeshire to achieve the Mental Health Matters School Award and this has been achieved by the whole school committing to mental health awareness and support for both pupils and staff.



# School Rules

## Rheolau'r Ysgol

Milford Haven School is a caring community where discipline is based on mutual respect, with clear systems and consistent procedures. Our aim is that children should enjoy being in school, in a safe, secure and stimulating environment where they can develop their full potential.

School rules are therefore few and mainly concerned with the safety and health of pupils. The guiding principles are common sense, courtesy and respect for others. We demand very high standards of behaviour and aim to achieve this in a friendly atmosphere.



### READY BAROD

I strive to arrive to lessons promptly, equipped and ready for all learning experiences.



### RESPECT PARCH

I engage respectfully in all learning experiences and environments, demonstrating respect for my own progress and the progress of my peers.



### SAFE DIOGEL

I am safe within my teaching environment, valuing my own wellbeing as well as that of others.







## School Uniform Gwisg Ysgol

School uniform puts everyone on an equal footing. It needs to be low cost, comfortable, easy to wash, suitable for work and conform to health and safety rules and to create a sense of belonging to the school community.

Pupils are expected to wear black footwear (no colours, logos, stripes etc) and ensure that hairstyles and colours comply with our requirements – hair should be in a natural shade; please note that colours such as pink, bright red or purple are not permitted.

We don't allow designer clothes, designer hairstyles such as tramlines, jewellery or make-up.

Please note – non-uniform items will be confiscated and can be collected from Return to Learn at the end of the school day. Where possible, parents/carers can drop off correct items to school where this is not possible, pupils who cannot remove non-uniform items will be placed in supervision for break and lunch until the correct items are worn.

### Uniform

- Royal blue sweatshirt with badge
- Royal blue polo-shirt with badge
- Plain black skirt, straight or pleated, knee length
- Plain black trousers, tailored
- Plain black shorts, skorts or knee length cycling shorts (from Easter)
- Plain white or dark socks
- Plain black ribbed tights
- Plain black shoes
- Outdoor garment
- Plain black, navy or royal blue jacket
- Optional royal blue fleece with logo

### Sportswear

- Royal blue & yellow polo shirt/Rugby top
- Black/navy shorts or skorts
- Gold/white socks
- Trainers
- Rugby boots
- Royal navy hoody (optional)
- Black/navy tracksuit bottoms outside if cold

### Clothing Grants

Parents/Carers of pupils in year 7-11 who are in receipt of Income Support and Family Credit are eligible to receive an Essential School Uniform Grant and are advised to contact the Education Office, County Hall, Haverfordwest 01437 764551.



## **Milford Haven School**

Steynton Road

Milford Haven

SA73 1AE

Tel: **01646 690021**

Fax: 01646 696600

Email: [admin@milfordhavenschool.co.uk](mailto:admin@milfordhavenschool.co.uk)

**[www.milfordhavenschool.co.uk](http://www.milfordhavenschool.co.uk)**

Milford Haven School  
Ysgol Aberdaugleddau

